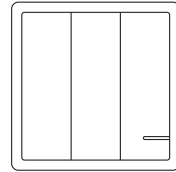
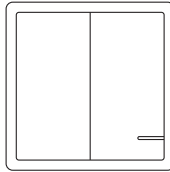
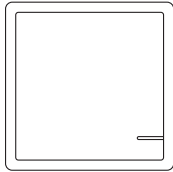
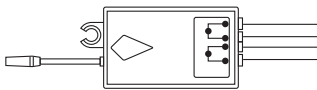


INSTALLATION INSTRUCTION

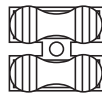
WIFI RECEIVER



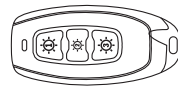
Wireless Switch



Receiver



Wire Connector



Hand Remote Control

2 YEARS
WARRANTY

INTRODUCTION & WARRANTY

Thank you for selecting and buying V-TAC Product. V-TAC will serve you the best. Please read these instructions carefully before starting the installation and keep this manual handy for future reference. If you have any other query, please contact our dealer or local vendor from whom you have purchased the product. They are trained and ready to serve you at the best. The warranty is valid for 2 years from the date of purchase. The warranty does not apply to damage caused by incorrect installation or abnormal wear and tear. The company gives no warranty against damage to any surface due to incorrect removal and installation of the product. This product is warranted for manufacturing defects only.

***Note:** The product depicted in this manual may appear slightly different from what you receive in the box

MULTI-LANGUAGE MANUAL - QR CODE

Please scan the QR code to access the manual in multiple languages.



INTRODUCTION

Based on radio frequency (RF) and energy harvesting technology, wireless switch does not need external power supply to control. When pressing the button, the mechanical energy automatically converts into electrical energy. Meanwhile the switch will send out radio signals to control the receiver on/off.

WARNING

1. Please switch off the power before starting the installation.
2. Installation must be performed by a certified electrician/person.



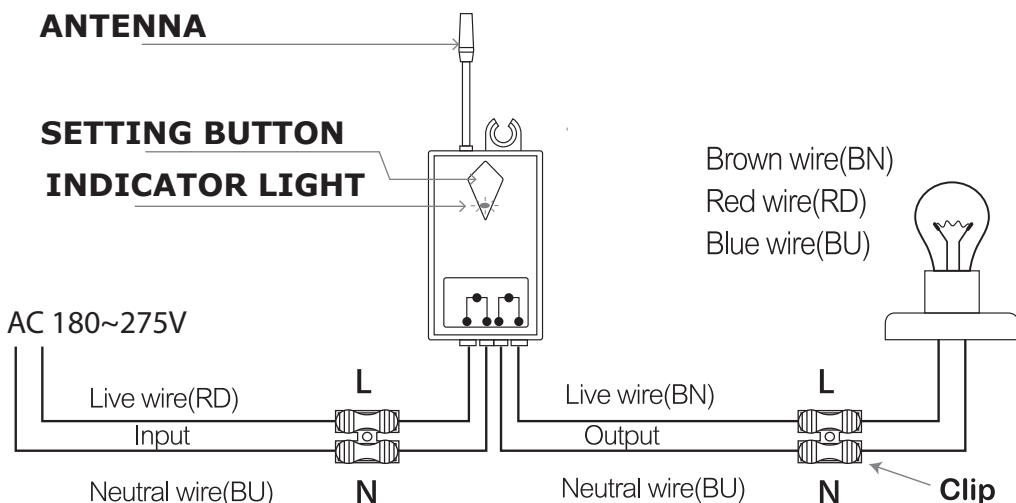
This marking indicates that this product should not be disposed of with other household wastes.



Caution, risk of electric shock.

RECEIVER INSTALLATION

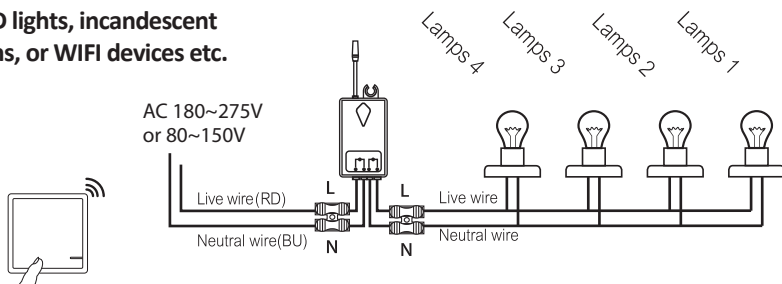
Please follow the below installation diagram to install the receiver.



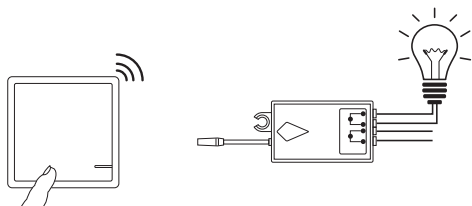
NOTES

A. The integrated load of the wireless receiver is 1000W.

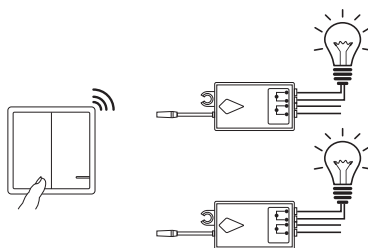
Lamps can be: LED lights, incandescent bulbs, exhaust fans, or WIFI devices etc.



B. A one-gang wireless switch controls a wireless receiver

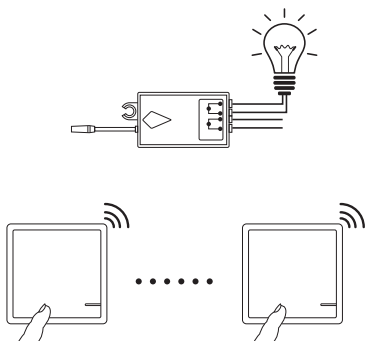


C. A two-gang wireless switch controls 2 wireless receivers

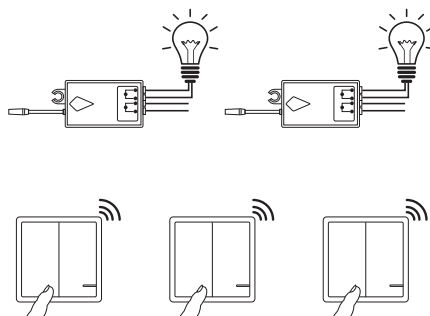


APPLICATION (HOME, HOTEL, INN OR FACTORY ETC.)

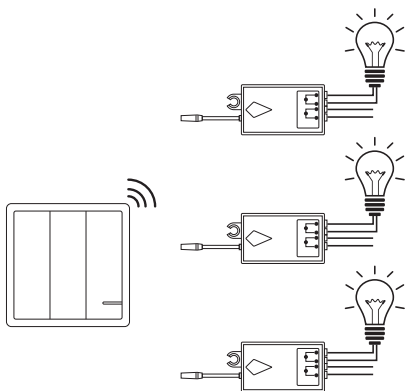
D. A receiver can be controlled by 8pcs of wireless switch panels at the most.



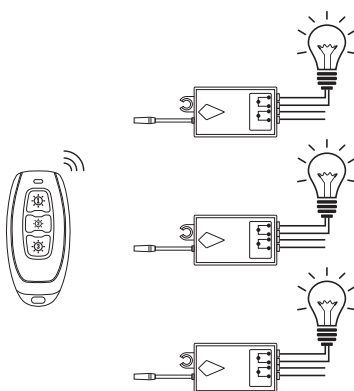
E. Three two-gang wireless switch controls 3 wireless receivers



F. A three-gang wireless switch controls 3 wireless receivers



G. A hand remote control switch controls 3 wireless receiver.



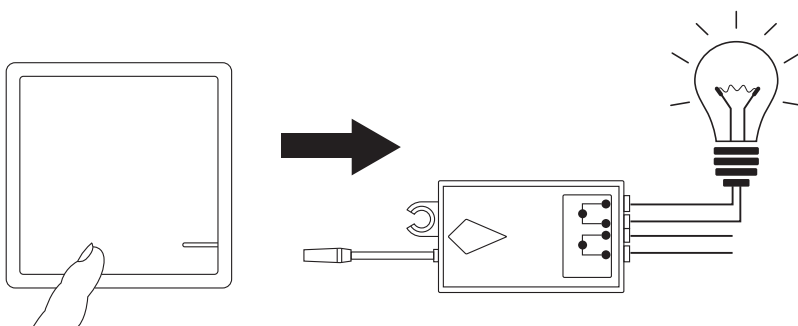
CODE OPERATION

PAIRING THE SWITCH & THE RECEIVER

1. Connect the receiver between the light and the power source.
2. Power on electricity, press and hold the setting button for 2 seconds. When the indicator light flashes, it enters the matching code mode, then loosen your finger.
3. Press the wireless switch button that you want to pair. Use the wireless switch to control the light on or off, indicating that the learning code is successful.

NOTE:

- (a) Not recommended that 1 switch controls many receivers.
- (b) Ensure that there is no other pairing within 100 mtrs range to avoid interface.

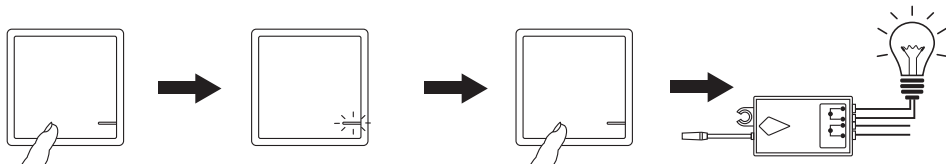


ADDING ANOTHER SWITCH TO A PAIRED SWITCH

Press and hold paired switch panel for about 20s till LED indicator on switch blinks rapidly, then loosen your finger, press the new one, finally test whether it can turn on/off the lamps.

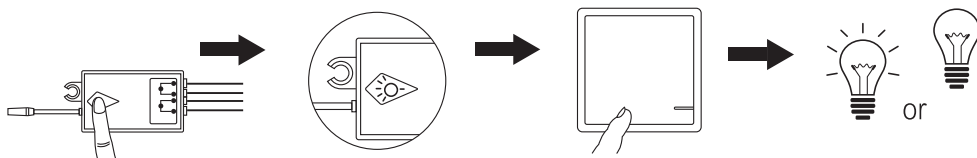
DELETING ADDITIONAL SWITCH FROM A PAIRED SWITCH

Press and hold paired switch panel for about 60s, during which LED indicator on switch changes from: firstly blinks rapidly; secondly blinks 8 times slowly, thirdly blinks 9 times at slower speed, finally blinks once at slowest speed, then loosen



UNPAIRING THE RECEIVER

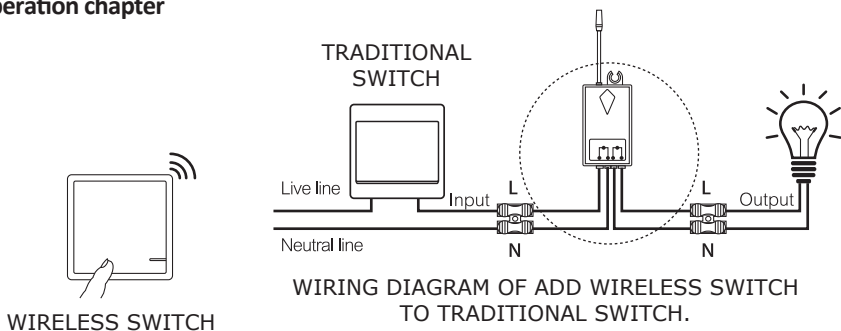
Press and hold the receiver button for about 10s, loosen your finger when the indicator light changes from rapid blinks to slower, press the paired switch panel cannot control the lamps



HOW TO SET OPEN/CLOSE STATE OF RECEIVER TO MAKE WIRELESS SWITCH COMPATIBLE WITH TRADITIONAL SWITCH

Note: The receiver is default in Close state.

1. Power off the electricity, install the receiver as the diagram, and distinguish live from neutral lines.
2. Power on the electricity, then program the receiver with the switch according to the Learning code Operation chapter



IF THE RECEIVER IS IN OPEN STATE,

- Turn on the traditional switch to light the lamps, the wireless switch can control the lamps.
- Turn off the traditional switch to light the lamps, the wireless switch cannot control the lamps.

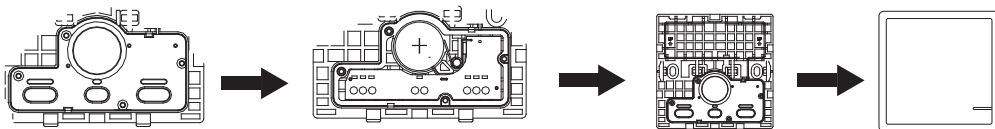
METHOD OF SETTING THE RECEIVER IN OPEN STATE

Press and hold switch button for 16s, loosen your finger when the indicator light is continuously bright. (During the 16s, the indicator light will change from quick flash to slower flash, after that, the indicator light will be off, then will be on.)

METHOD OF SETTING THE RECEIVER IN CLOSE STATE

Press and hold switch button for 16s, loosen your finger when the indicator light is continuously bright.

REPLACE THE BATTERY

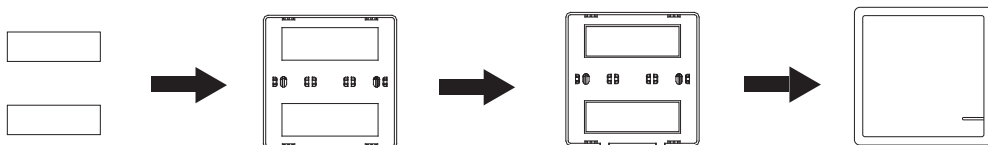


1. Remove switch frame and panel with hand or screwdriver.
2. Remove 4 screws with screwdriver, take off the battery cover
3. Replace the old battery with the new one, pay attention to the positive and negative poles of the battery;
4. Install the panel and frame again.

WIRELESS SWITCH INSTALLATION

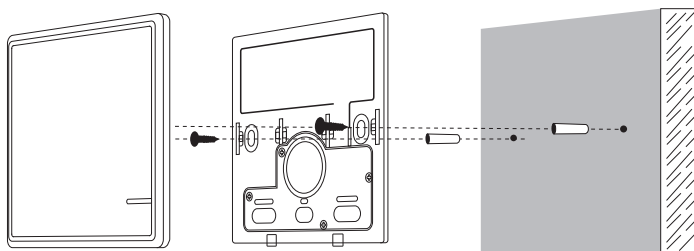
The switch can be surface mounted with screws or double-sided stickers or set it on the table.

1. Install with Double-sided adhesive. (Included)



Pick up the area where you're going to place the switch, clean the surface with wet rag, post the adhesive rubber in the back of the switch, then attach the switch to the clean surface.

2.Install with screws (not included) First, take apart the frame and button panel of the switch, Fix the switch base on the wall with two screws, then install the parts together.



SPECIFICATIONS

PARAMETERS OF WIRELESS RECEIVER

Product Size	39*23*22MM	Working voltage	AC 150~275V or 80~150V
Switch times	>400,000 times	Working frequency	433.932 MHz +/- 75KHz
Sensitivity	-116dB	Relay	10A
Working current	≤0.8W	Standby current	≤0.5W
Resistive load	1800W	Composite load	1000W (LED)
Temperature rise when working	≤15°C	Fireproof PC	CHIMEI
Signal light on the receiver	Red light	Package weight	32~35g

PARAMETERS OF THE METAL HAND REMOTE

Size	62*30*12MM	Working frequency	433.932 MHz +/- 75KHz
Waterproof	IP44	Quantity of the button	3 buttons
Working voltage	2~3V(CR2032)	Life of the battery	≥300,000 times
Standby current	≤0.01 uA	Working temperature	0~65°C
Emission current	≤25 mA	Storage temperature	-10~85°C
Emission Power	≥+5dbM	Remote distance	≥160m outdoor ≥20m indoor

PARAMETERS OF THE WIRELESS SWITCH

Product Size	86*86*11MM 86*86*13MM	Type	1-gang, 2gang, 3-gang
Switch times	>600,000 times	Working frequency	433.932 MHz +/-75KHz
Sensitivity	-116dB	Working voltage	3V (CR2032)
Package weight	82~86g	Life of the battery	>300,000 times
Emission current	≤30 mA	Standby current	≤0.01 uA
Working temperature	-40~+70°C	Waterproof	IP54
Working characteristics	No need wiring	Fireproof PC	CHIMEI
Remote distance	>600m outdoor	Light on the switch	Blue light
Remote distance	>40m indoor	Interchangeable panel	The three kinds of panels can be interchangeable

RECEIVER INSTALLATION

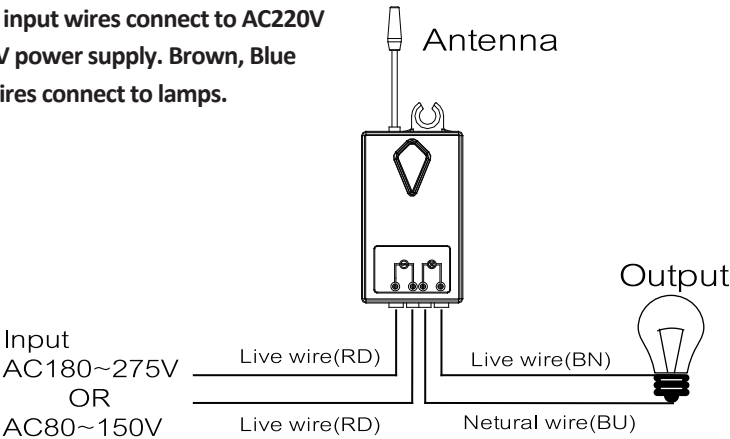
By Screws: Fit the receiver by KA3.5x25 screws on applicable place.

By 3M tapes: Stick the double-side tape on the plain surface of the receiver, then stick the receiver to the applicabe place.

WARNING!

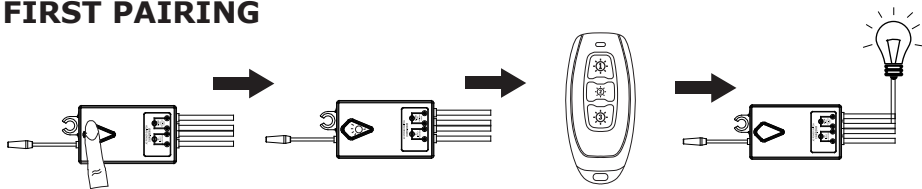
- 1. Please switch off the power before starting the installation.
- 2. Installation must be performed by a certified electrician / person.

Red, Blue input wires connect to AC220V to AC110V power supply. Brown, Blue Output wires connect to lamps.



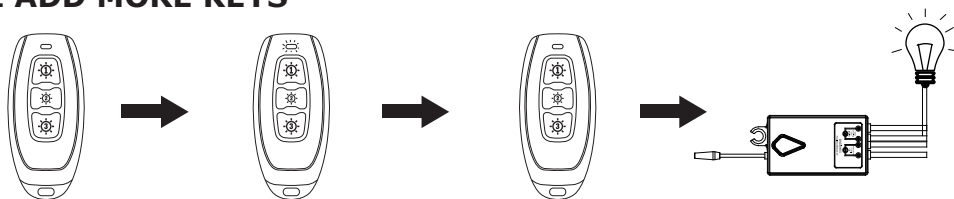
CODE LEARNING/PAIRING OR DELETE

I FIRST PAIRING



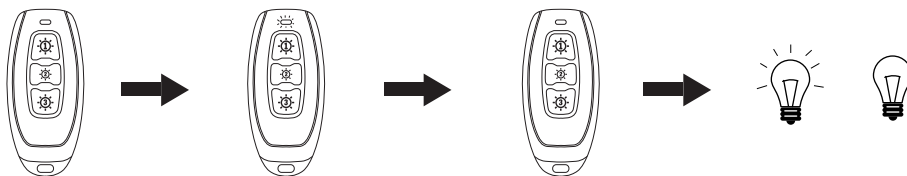
- > Keep pressing the receiver key for 2s
- > LED light is flashing, loosen receiver key and enter the learning mode.
- > Press the remote key which you want to learn code.
- > Lamp turns on. Pairing is successful.

II ADD MORE KEYS



- > Press and hold paired remote key for about 20s till LED indicator on switch blinks rapidly, then loosen your grip, press the new one. Finally test whether it can turn on/off the lamps.

III DELETE KEYS



- > Press and hold paired remote key for about 60s, during remote LED indicator on remote changes from:
Firstly blinks rapidly; Secondly blinks 8 times slowly, Thirdly blinks 9 times at slower speed, Finally blinks once at slowest speed, then loosen your grip, press the remote key again to check if you the keys have been deleted or not.