

INSTALLATION INSTRUCTION

LED WALL LIGHT

TECHNICAL DATA

Model	VT-8056
Watts	9W
Lumens	850LM
Beam Angle	90°
CRI	>80
Body Type	PC
On/Off Cycle	15,000 Times
Dimension	173x81x46mm
Input Power	AC:220-240V,50/60Hz



IP65
RATING

2 YEARS
WARRANTY*

INTRODUCTION & WARRANTY

Thank you for selecting and buying V-TAC product. V-TAC will serve you the best. Please read these instructions carefully before starting the installation and keep this manual handy for future reference. If you have any another query, please contact our dealer or local vendor from whom you have purchased the product. They are trained and ready to serve you at the best. The warranty is valid for 2 years from the date of purchase. The warranty does not apply to damage caused by incorrect installation or abnormal wear and tear. The company gives no warranty against damage to any surface due to incorrect removal and installation of the product. The products are suitable for 10-12 Hours Daily operation. Usage of product for 24 Hours a day would void the warranty. This product is warranted for manufacturing defects only.

WARNING!

1. Please make sure to turn off the power before starting the installation.
2. Installation should only be done by a certified electrician.
3. The light source of this luminaire is not replaceable, when the light source reaches its end of life the whole luminaire should be replaced.



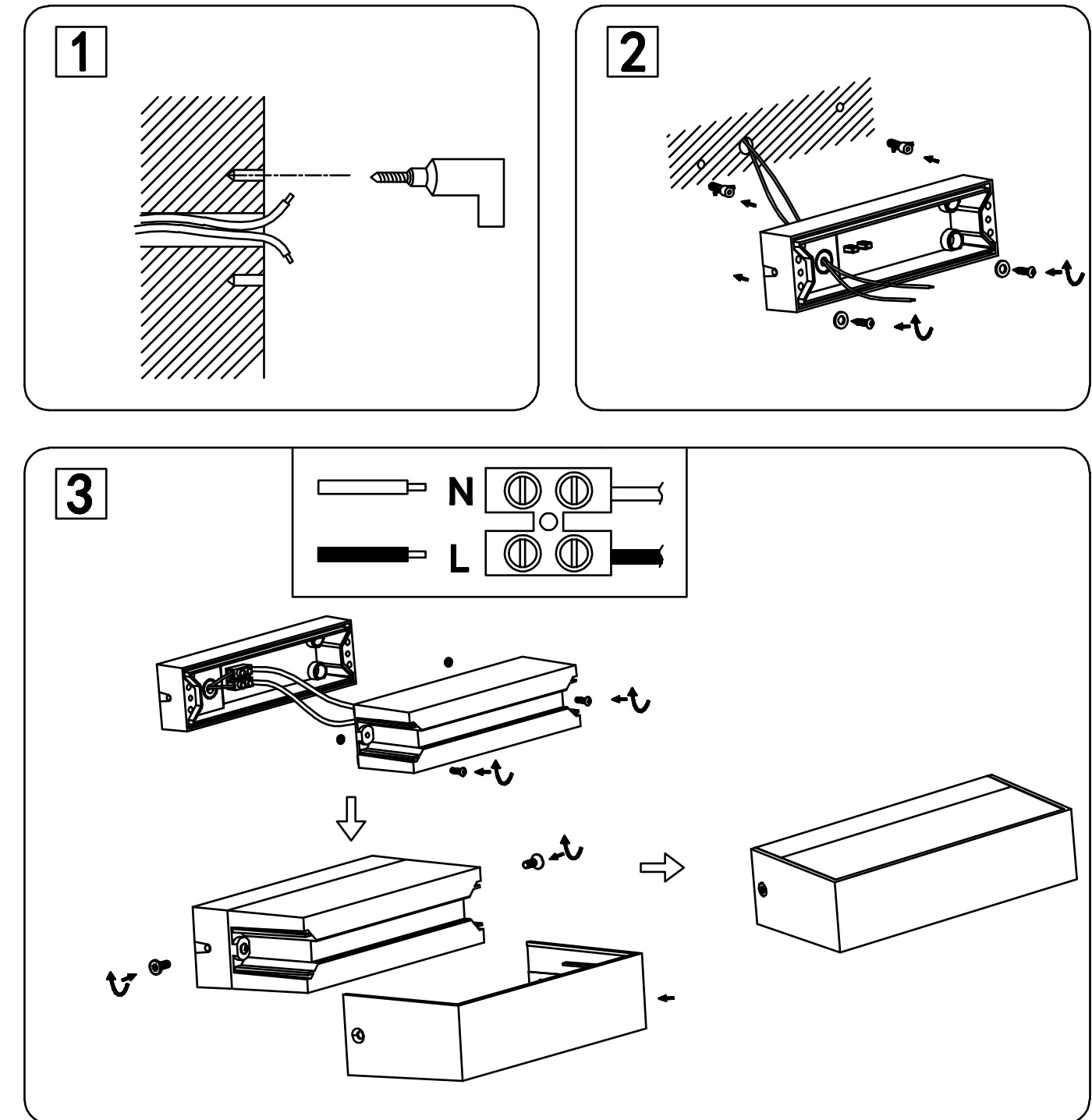
This marking indicates that this product should not be disposed of with other household wastes.



Caution, risk of electric shock.

IN CASE OF ANY QUERY/ISSUE WITH THE PRODUCT, PLEASE REACH OUT TO US AT: SUPPORT@V-TAC.EU
FOR MORE PRODUCTS RANGE, INQUIRY PLEASE CONTACT OUR DISTRIBUTOR OR NEAREST DEALERS.
V-TAC EUROPE LTD. BULGARIA, PLOVDIV 4000, BUL.L.KARAVELOW 9B

INSTALLATION DIAGRAM:



INSTALLATION INSTRUCTION

- Switch off the power before installing the lamp.
- Drill a wall as per the bracket screw dimension size.
- Place the masonry plug in the hole and then fix the bracket on the wall by using screws.
- Connect the wires as per wiring diagram.
- Fix the fixture into the bracket and tighten the screws.
- Bring back the cover of the fixture and fix by using screws.
- Switch on the power and test the light